



**REGIONAL SPECIALISED METEOROLOGICAL CENTRE-TROPICAL CYCLONES, NEW DELHI  
TROPICAL WEATHER OUTLOOK**

**DEMS-RSMC TROPICAL CYCLONES NEW DELHI DATED 14.06.2021**

**TROPICAL WEATHER OUTLOOK FOR NORTH INDIAN OCEAN (THE BAY OF BENGAL AND ARABIAN SEA) VALID FOR NEXT 120 HOURS ISSUED AT 0600 UTC OF 14.06.2021 BASED ON 0300 UTC OF 14.06.2021.**

**BAY OF BENGAL:**

YESTERDAY'S LOW PRESSURE ARE OVER NORTH COASTAL ODISHA AND ADJOINING GANGETIC WEST BENGAL AND JHARKHAND NOW LIES OVER SOUTH JHARKHAND & NEIGHBOURHOOD WITH THE ASSOCIATED CYCLONIC CIRCULATION EXTENDING UPTO MID TROPOSPHERIC LEVELS TILTING SOUTHWARDS WITH HEIGHT ON TODAY THE 14<sup>th</sup> JUNE 2021. IT IS LIKELY TO MOVE WEST NORTHWESTWARDS .

SCATTERED LOW AND MEDIUM CLOUDS WITH EMBEDDED INTENSE TO VERY INTENSE CONVECTION LAY OVER JHARKHAND ,NORTH CHATTISGARH ,COASTAL AND NORTHWEST ODISHA AND MODERATE TO INTENSE CONVECTION LAY OVER WEST GANGETIC WEST BENGAL ,REST OF ODISHA & NEIGHBOURHOOD IN ASSOCIATION WITH LOW PRESSURE AREA (LPA) OVER THE REGION.

SCATTERED TO BROKEN LOW AND MEDIUM CLOUDS WITH EMBEDDED INTENSE TO VERY INTENSE CONVECTION LAY OVER BAY OF BENGAL ,NORTH OF LATITUDE 10.0<sup>0</sup>N & NORTH ANDAMAN SEA. SCATTERED LOW AND MEDIUM CLOUDS WITH EMBEDDED MODERATE TO INTENSE CONVENTION LAY OVER REST BAY OF BENGAL AND SOUTH ANDAMAN SEA.

**PROBABILITY OF CYCLOGENESIS (FORMATION OF DEPRESSION) DURING NEXT 120 HRS):**

24 HOURS	24-48 HOURS	48-72 HOURS	72-96 HOURS	96-120 HOURS
NIL	NIL	NIL	NIL	NIL

**ARABIAN SEA:**

SCATTERED LOW AND MEDIUM CLOUDS WITH EMBEDDED INTENSE TO VERY INTENSE CONVECTION LAY OVER EASTCENTRAL ARABIAN SEA. SCATTERED LOW AND MEDIUM CLOUDS WITH EMBEDDED MODERATE TO INTENSE CONVENTION LAY OVER SOUTHEAST ARABIAN SEA AND COMORIN REGION.

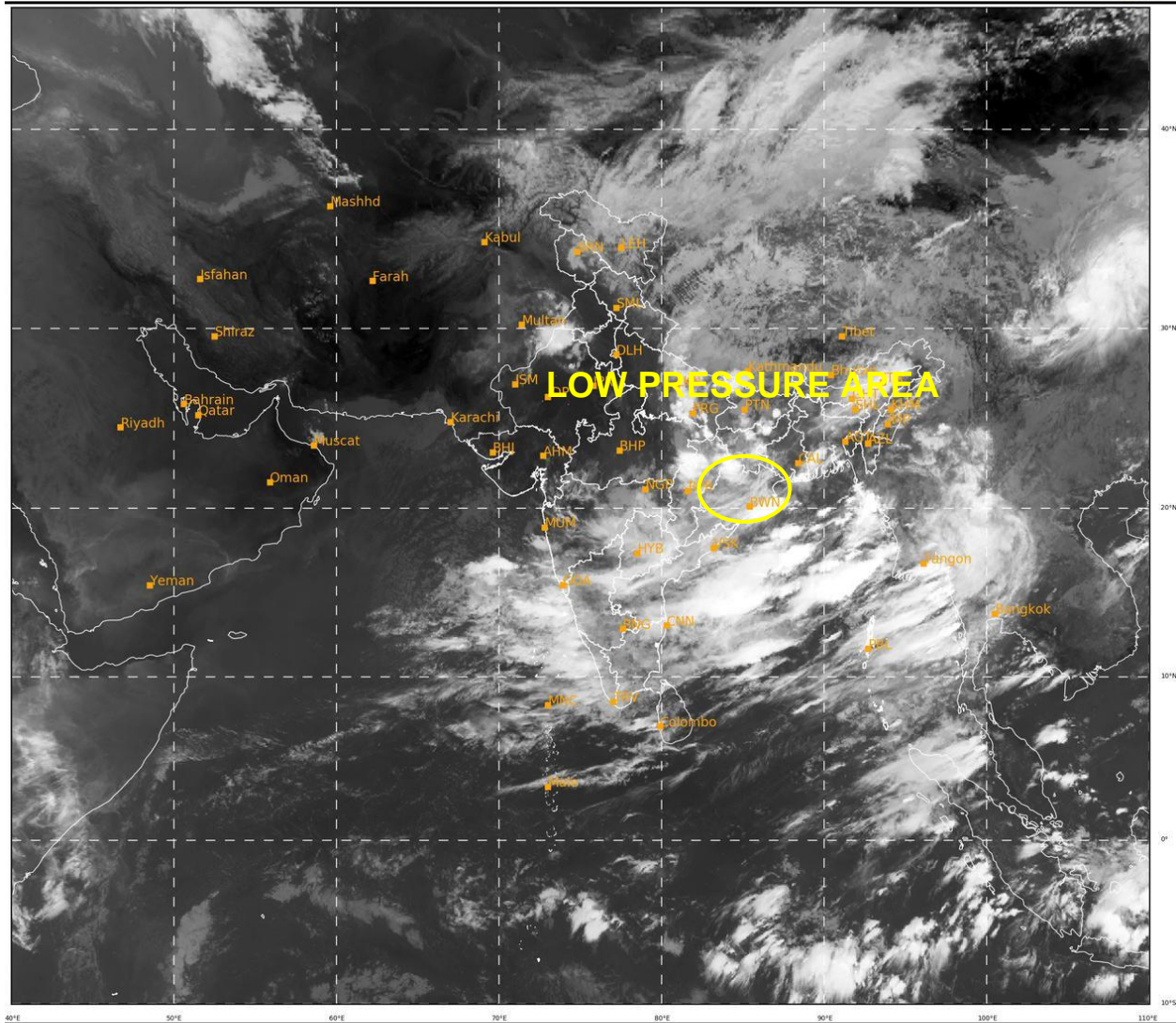
**PROBABILITY OF CYCLOGENESIS (FORMATION OF DEPRESSION) DURING NEXT 120 HRS):**

24 HOURS	24-48 HOURS	48-72 HOURS	72-96 HOURS	96-120 HOURS
NIL	NIL	NIL	NIL	NIL

REMARKS: NIL

SAT : INSAT-3D IMG  
IMG\_TIR1 10.8 um  
L1C Mercator

14-06-2021/(0300 to 0326) GMT  
14-06-2021/(0830 to 0856) IST



400

939

IMD, DELHI

PROBABILITY OF CYCLOGENESIS (FORMATION OF DEPRESSION):NIL: 0%, LOW: 1-25%, FAIR: 26-50%, MODERATE: 51-75% AND HIGH: 76-100%  
This is a guidance Bulletin for the WMO/ESCAP Panel Member countries,. Please visit respective National websites for Country specific Bulletins